



空氣交絡噴嘴 JA-AAD Type False-Twist Texturing Jet JA-AAD

提供高水準交絡性以及適當噴節牢度。

可安裝各大廠牌之高速假撚機中。

應用於 DTY/ACY 加工製程，適用於各種規格的紗線包括聚酯纖維(PET)/聚醯胺纖維(NYLON)和聚丙烯纖維(PP)等。

Provides excellent interlacing functions and keeps a good interlacing retention.

Compatible with most texturing machines.

This series can be used with polyester /polyamide/ polypropylene for DTY/ACY applications.



I. 規格

Specifications

Air jet number	Air hole diameter (mm)	Angle of Air hole	Vortex diameter (mm)	Count range denier
JA-AAD-08A24-T1-L	0.8	0°	2.4	10~ 50
JA-AAD-08A24-T1-S	0.8	0°	2.4	10 ~ 50
JA-AAD-11A24-T1-L	1.1	0°	2.4	50~ 125
JA-AAD-11R24-T1-L	1.1	15°	2.4	50~ 125
JA-AAD-11R24-T1-S	1.1	15°	2.4	50~ 125
JA-AAD-11R40-T1-S	1.1	15°	4.0	50~ 125
JA-AAD-12A24-T1-L	1.2	0°	2.4	75 ~ 125
JA-AAD-12A24-T1-S	1.2	0°	2.4	75 ~ 125
JA-AAD-12R24-T1-L	1.2	15°	2.4	75 ~ 125
JA-AAD-12R24-T1-S	1.2	15°	2.4	75 ~ 125
JA-AAD-13A40-T1-L	1.3	0°	4.0	100~250
JA-AAD-13R40-T1-L	1.3	15°	4.0	100~250
JA-AAD-13R40-T1-S	1.3	15°	4.0	100~250
JA-AAD-14A37-T1-L	1.4	0°	3.7	125 ~ 300
JA-AAD-14A40-T1-L	1.4	0°	4.0	125 ~ 300
JA-AAD-14A40-T1-S	1.4	0°	4.0	125 ~ 300
JA-AAD-14N95-T1-L	1.4	12°	9.5	125 ~ 300

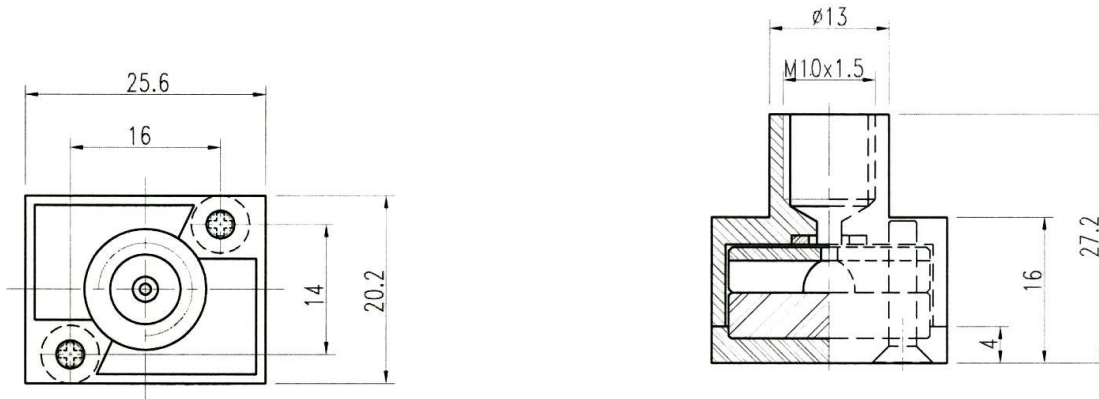
JA-AAD-14R40-T1-L	1.4	15°	4.0	125 ~ 300
JA-AAD-14R40-T1-S	1.4	15°	4.0	125~300
JA-AAD-15A40-T1-L	1.5	0°	4.0	150~350
JA-AAD-15A40-T1-S	1.5	0°	4.0	150~350
JA-AAD-15R40-T1-L	1.5	15°	4.0	150~350
JA-AAD-15R40-T1-S	1.5	15°	4.0	150~350
JA-AAD-16A40-T1-L	1.6	0°	4.0	175~450
JA-AAD-16A40-T1-S	1.6	0°	4.0	175~450
JA-AAD-16A60-T1-L	1.6	0°	5.6	175~450
JA-AAD-16L56-T1-L	1.6	10°	5.6	175~450
JA-AAD-16L56-T1-S	1.6	10°	5.6	175~450
JA-AAD-16L60-T1-L	1.6	10°	6.0	175~450
JA-AAD-16N95-T1-L	1.6	12°	9.5	175~450
JA-AAD-16R40-T1-L	1.6	15°	4.0	175~450
JA-AAD-16R40-T1-S	1.6	15°	4.0	175~450
JA-AAD-16R70-T1-L	1.6	15°	7.0	150~350
JA-AAD-17R40-T1-L	1.7	15°	4.0	200~550
JA-AAD-17R40-T1-S	1.7	15°	4.0	200~550
JA-AAD-17R70-T1-L	1.7	15°	7.0	200~550
JA-AAD-18A70-T1-L	1.8	0°	7.0	225~650
JA-AAD-18A70-T1-S	1.8	0°	7.0	225~650
JA-AAD-18L56-T1-L	1.8	10°	5.6	225~650
JA-AAD-18R40-T1-L	1.8	15°	4.0	225~650
JA-AAD-18R40-T1-S	1.8	15°	4.0	225~650
JA-AAD-18R56-T1-L	1.8	15°	5.6	225~650
JA-AAD-18R70-T1-L	1.8	15°	7.0	225~650
JA-AAD-18R70-T1-S	1.8	15°	7.0	225~650
JA-AAD-20A70-T1-L	2.0	0°	7.0	300~750
JA-AAD-20A70-T1-S	2.0	0°	7.0	300~750
JA-AAD-20F70-T1-L	2.0	5°	7.0	300~750
JA-AAD-20F70-T1-S	2.0	5°	7.0	300~750
JA-AAD-20R70-T1-L	2.0	15°	7.0	300~750
JA-AAD-22F70-T1-L	2.2	5°	7.0	400 ~ 900
JA-AAD-25A90-T1-L	2.5	0°	9.0	600~1000
A-AAD-25F70-T1-L	2.5	5°	7.0	600~1000
JA-AAD-25F70-T1-S	2.5	5°	7.0	600~1000

JA-AAD-25N95-T1-L	2.5	12°	9.5	600~1000
JA-AAD-25R95-T1-L	2.5	15°	9.5	600~1000
JA-AAD-28R80-T1-L	2.8	15°	8.0	700~1100
JA-AAD-30R70-T1-L	3.0	15°	7.0	800~1200
JA-AAD-L1525-T1-L	1.5x2.5	10°	7.56x8.56	250~700
JA-AAD-L1525-T1-S	1.5x2.5	10°	7.56x8.56	250~700

* L : Total housing length=27.2mm S : Total housing length=22mm

II. 噴嘴尺寸

Jet dimensions



III. 噴嘴空氣耗氣量

Jet air consumption

計算公式：

$$\text{耗氣量} = d^2 \times 0.46571 \times (p+1)$$

q_{vn} : 空氣消耗量 (m^3/h)

d : 噴嘴孔徑 (mm)

p : 使用的空氣壓力 (kg/cm^2)

對壓縮空氣的要求：

- 最大壓力波動 $\pm 0.1 \text{ kg}/\text{cm}^2$
- 溫度(Tem) $25^\circ\text{C} \pm 5^\circ\text{C}$
- 相對濕度(RH%) $< 40\%$
- 最大含油率： $0.1 \text{ mg}/\text{m}^3$
- 最大殘餘微粒：
 - 顆粒大小 $1 \mu\text{m}$
 - 顆粒密度 $1 \text{ mg}/\text{m}^3$

Air consumption :

$$q_{vn} = d^2 \times 0.46571 \times (p+1)$$

q_{vn} : Air consumption (m^3/h)

d : Air hole diameter (mm)

p : Air pressure (kg/cm^2)

Compressed air requirements

- Air pressure fluctuations max : $\pm 0.1 \text{ kg}/\text{cm}^2$
- Temperature: $25^\circ\text{C} \pm 5^\circ\text{C}$
- Relative Humidity(RH%) $< 40\%$
- Max residual oil: $0.1 \text{ mg}/\text{m}^3$
- Max residual particles:
 - Particles size $1 \mu\text{m}$
 - Particles density $1 \text{ mg}/\text{m}^3$