



預噴嘴 JA-MG Type

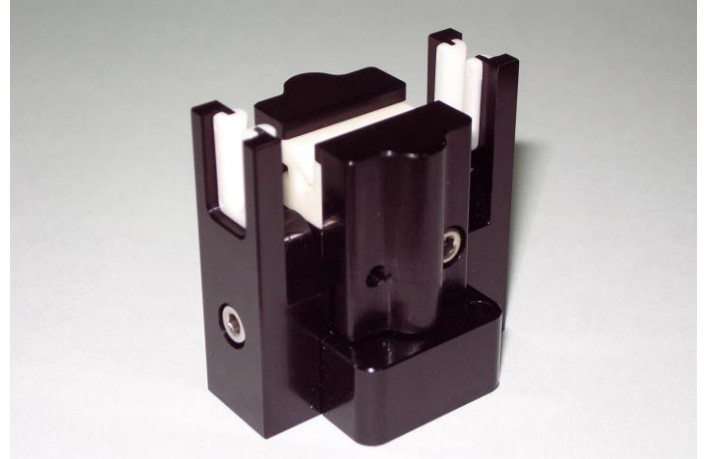
Migration Jet JA-MG-11

主要具最佳角度的二個氣孔設計，使紗線運作性佳，且具低耗氣性。

給予紗線一致的均油效果，減少毛羽產生，利於後續加工工程。

The two holes with the best angle design make good yarn operability and low air consumption.

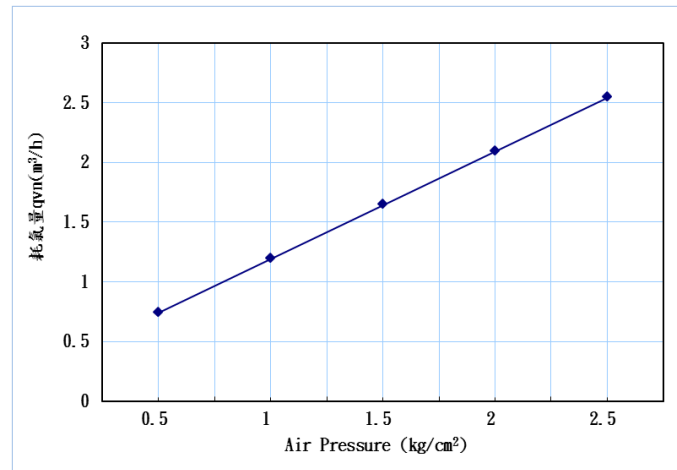
Provides excellent oil regularity, reduce broken filament, allows more efficient in downstream processes.



I. 規格 Specifications

Spinning Jet Type	JA-MG-11
Air hole (mm)	Ø 1.1x2
Pressure range(kg/cm ²)	0.5 -2.5
Spinning count(den)	< 500
Take-up speed (m/min)	~ 7000

II. 噴嘴空氣耗氣量 Jet air consumption



III. 噴嘴尺寸 Jet dimensions

