



預噴嘴 JA-MG Type

Migration Jet JA-MG-16-1.3N-1E-H1

具有最佳角度的進氣孔設計，使紗線運作性佳，且具低耗氣性。

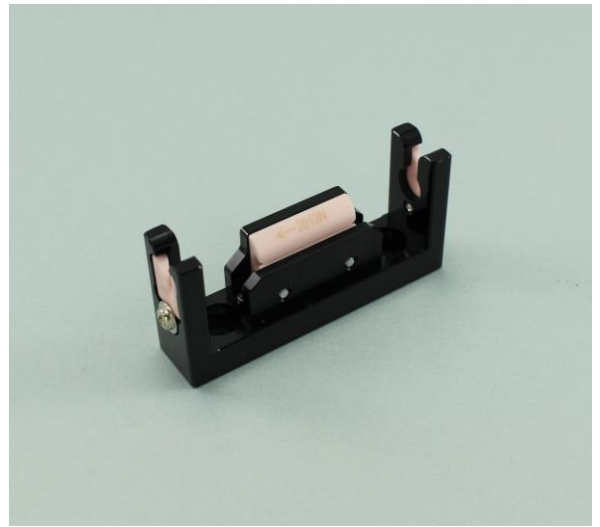
體積小型，節省空間。

給予紗線一致的均油效果，減少毛羽產生，利於後續加工工程。

Specially designed air holes make the air consumption low. The optimal angles of these three holes make yarn run more stable.

Compact volume Migration Jet.

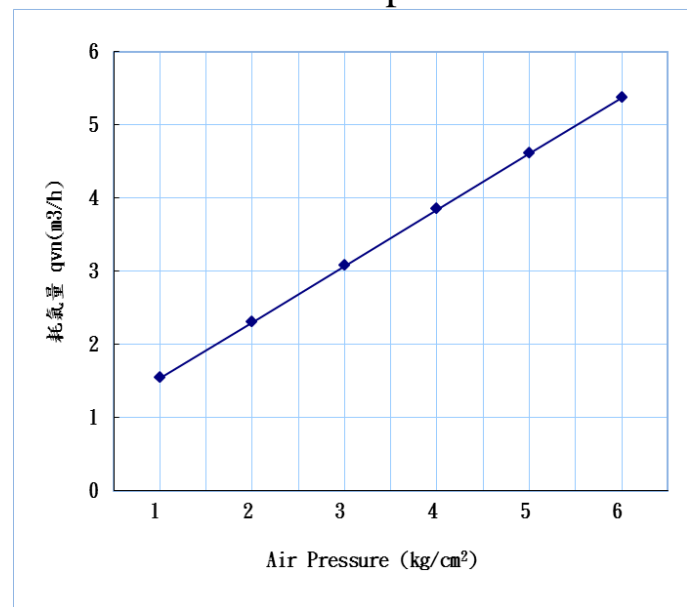
Provides excellent oil regularity, reduce broken filament, allows more efficient in downstream processes.



I. 規格 Specifications

Spinning Jet Type	JA-MG-16-1.3N-1E-H1
Air hole (mm)	Ø 1.3
Pressure range(kg/cm ²)	1 -6
Spinning count(den)	< 500
Take-up speed (m/min)	~ 7000
Number of yarn ends	1,6,8,10,12,16,20,24
Gauge(mm)	≥4.5

II. 噴嘴空氣耗氣量 Jet air consumption



III. 噴嘴尺寸 Jet dimensions

